

**IL-22 Antibody**  
**Catalog # ASC11732****Specification**

---

**IL-22 Antibody - Product Information**

Application	WB, IF, ICC, E
Primary Accession	<a href="#">O9GZX6</a>
Other Accession	<a href="#">NP_065386</a> , <a href="#">10092625</a>
Reactivity	Human, Mouse, Rat
Host	Rabbit
Clonality	Polyclonal
Isotype	IgG
Calculated MW	Predicted: 20 kDa

Application Notes	Observed: 25 kDa KDa IL-22 antibody can be used for detection of IL-22 by Western blot at 1 - 2 µg/ml. Antibody can also be used for Immunocytochemistry starting at 5 µg/mL. For immunofluorescence start at 20 µg/mL.
-------------------	--

**IL-22 Antibody - Additional Information**

Gene ID **50616**

**Target/Specificity**

IL22; IL-22 antibody is human, mouse, and rat reactive. Multiple isoforms of IL-22 are known to exist.

**Reconstitution & Storage**

IL-22 antibody can be stored at 4°C for three months and -20°C, stable for up to one year.

**Precautions**

IL-22 Antibody is for research use only and not for use in diagnostic or therapeutic procedures.

**IL-22 Antibody - Protein Information**

**Name** IL22

**Synonyms** ILTIF, ZCYTO18

**Function**

Cytokine that plays a critical role in modulating tissue responses during inflammation (PubMed: [17204547](http://www.uniprot.org/citations/17204547)). Plays an essential role in the regeneration of epithelial cells to maintain barrier function after injury and for the prevention of further tissue damage (PubMed: [17204547](http://www.uniprot.org/citations/17204547)). Unlike most of the cytokines, has no effect on immune cells. Signals through a heterodimeric receptor composed of two subunits, the specific receptor IL22RA1 which is present on non-immune cells in

many organs and the shared subunit IL10RB (PubMed:<a href="http://www.uniprot.org/citations/10875937" target="\_blank">10875937</a>, PubMed:<a href="http://www.uniprot.org/citations/18599299" target="\_blank">18599299</a>). Ligation of IL22RA1 with IL22 induces activation of the tyrosine kinases JAK1 and TYK2, which in turn activates STAT3. In turn, promotes cell survival and proliferation through STAT3, ERK1/2 and PI3K/AKT pathways (PubMed:<a href="http://www.uniprot.org/citations/25793261" target="\_blank">25793261</a>, PubMed:<a href="http://www.uniprot.org/citations/31311100" target="\_blank">31311100</a>). Promotes phosphorylation of GSK3B at 'Ser-9' and CTTN (By similarity). Promotes epithelial cell spreading (By similarity).

#### Cellular Location

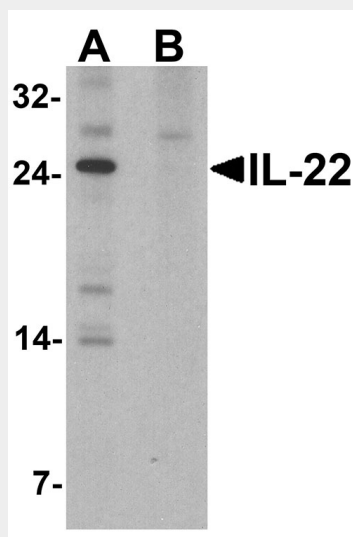
Secreted.

#### IL-22 Antibody - Protocols

Provided below are standard protocols that you may find useful for product applications.

- [Western Blot](#)
- [Blocking Peptides](#)
- [Dot Blot](#)
- [Immunohistochemistry](#)
- [Immunofluorescence](#)
- [Immunoprecipitation](#)
- [Flow Cytometry](#)
- [Cell Culture](#)

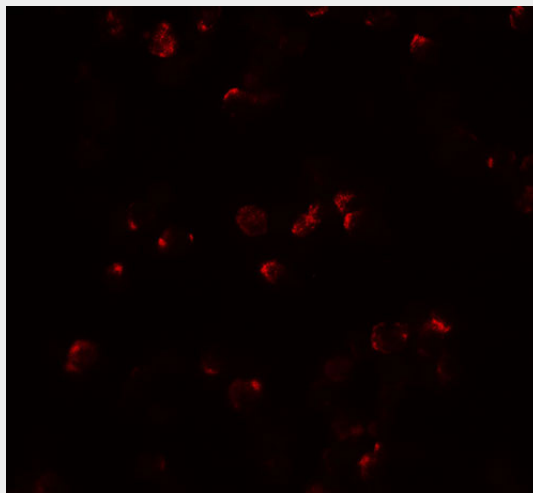
#### IL-22 Antibody - Images



Western blot analysis of IL-22 in HeLa cell lysate with IL-22 antibody at 1 µg/ml in (A) the absence and (B) the presence of blocking peptide.



Immunocytochemistry of IL-22 in HeLa cells with IL-22 antibody at 5 µg/mL.



Immunofluorescence of IL-22 in HeLa cells with IL-22 antibody at 20 µg/mL.

### **IL-22 Antibody - Background**

Interleukin-22 (IL-22) is a cytokine important for the modulation of tissue responses during inflammation (1). Unlike the distantly related IL-10, IL-22 does not inhibit the production of proinflammatory cytokines in monocytes in response to LPS, but it has some inhibitory effects on IL-4 production from Th2 T cells. IL-22 is expressed by both the adaptive arm of the immune system such as CD4 T cell subsets including Th17 cells, as well as by innate lymphocytes such as NK and LTI-like cells (2). IL-22 is highly expressed in several chronic inflammatory conditions, and studies suggest that IL-22 plays both inflammatory and protective roles (3).

### **IL-22 Antibody - References**

Xie MH, Aggarwal S, Ho WH, et al. Interleukin (IL)-22, a novel human cytokine that signals through the interferon receptor-related proteins CRF2-4 and IL-22R. *J. Biol. Chem.* 2000; 275:31335-9.  
Wolk K, Kunz S, Witte E, et al. IL-22 increases the innate immunity of tissues. *Immunity* 2004; 21:241-54.  
Wolk K, Witte E, Wallace E, et al. IL-22 regulates the expression of genes responsible for antimicrobial defense, cellular differentiation, and mobility in keratinocytes: a potential role in psoriasis. *Eur. J. Immunol.* 36:1309-23.